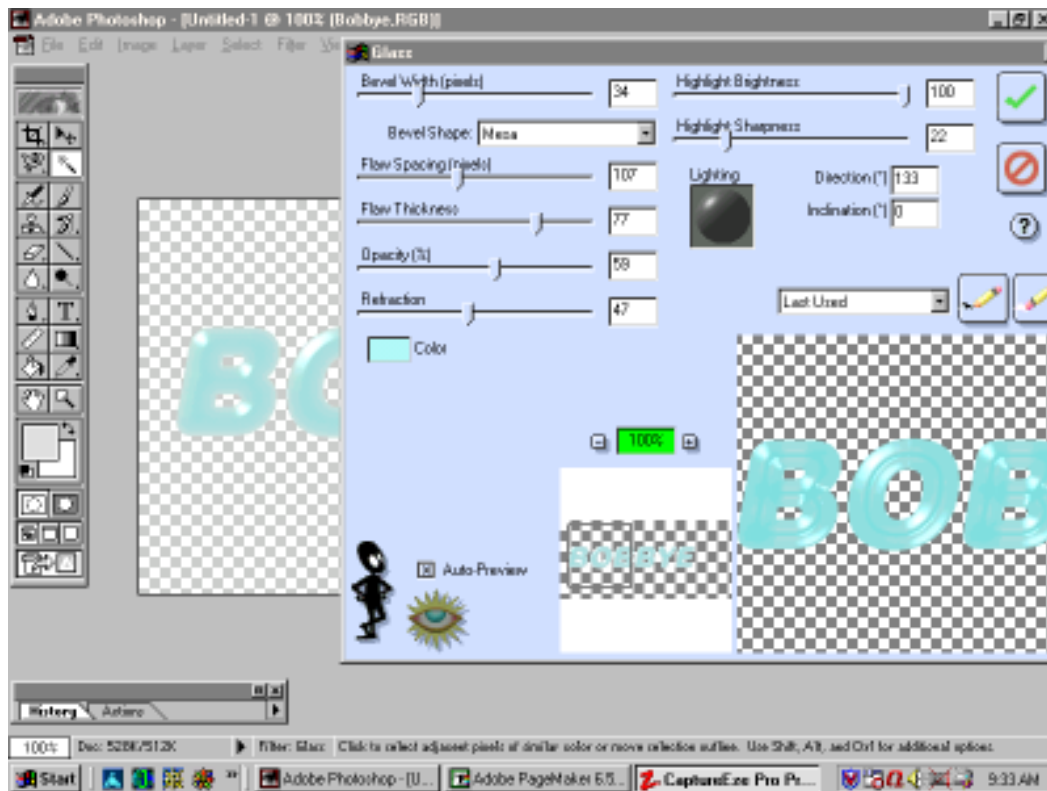


*A Little
Information
About a Big
Subject*

**F
I
L
L
T
E
R
S**

Those of you familiar with Adobe Photoshop — or any good paint package — know how much time can be consumed by playing with Filters, Effects and Fonts. Hours! The time literally disappears.

In these pages I will describe how I applied specific filters to achieve a certain look.



A Screen Shot showing both my Photoshop page and Eye Candy's Glass settings. The font used here was PlumpMT.

EYE CANDY GLASS

I used Eye Candy 3 Glass for the next 3-4 pages. Once rendered and saved you can't go back to see all the steps used to make an effect— unless you write down each step.

The Blue ones...

*100 resolution, transparent,
5"x3" size,
75 points*

Font Base color R=225, G=225, B=226 (a very light gray). Any good size font, Gill Sans, 75-100 points will do.

Select the individual letters with the Magic Wand then start playing.

I used Techno font for the blue ones. Still using EyeCandy's Glass filter with a very light blue highlight.

EYE CANDY GLASS



*Glass Filter
transparent
background. I
had Pagemaker
and Photoshop both
open and dragged from Photoshop to
Pagemaker.*



*Same Glass
Filter saved
as a JPG,
which does not
have a trans-
parent background. I had Pagemaker and
Photoshop both open and dragged from
Photoshop to Pagemaker.*

*These two and the top one on the next page
look fine in PageMaker, but when viewed as
.PDF the color is gone. The only thing different
is that I created the effect in PhotoShop and
then cut and pasted to PageMaker. Whereas
the others were created, and saved in
PhotoShop, then "Placed" into this document. I
decided to leave them as-is to demonstrate the
difference.*

EYE CANDY GLASS

BOBBY € *Same Glass Filter
with a transparent
background.*

BOBBY € *Exact Same
Glass Filter
Except
applied twice.*

BOBBY € *Exact Same
Glass Filter
Except
applied 3
times.*

Still using Glass, changing base colors from very pale gray to dark purple. I also played with lighting from above to straight on. Aren't these great?!? The gloss, and gel effects are beautiful.

Bobbye

Bobbye

Bobbye

Bobbye

These are all still using the Glass filter. I varied the base color, and font. Sometimes I reapplied the filter. The top one when I reapplied it, I chose purple on top of the teal one — the 2nd one.

BOBBY€

BOBBY€

Bobbye

Bobbye

These three are using the Chrome filter, I varied the font, size and number of bands. The bottom one is exactly like the middle one with Fire applied. There are nicer fires; this is how this version came out.

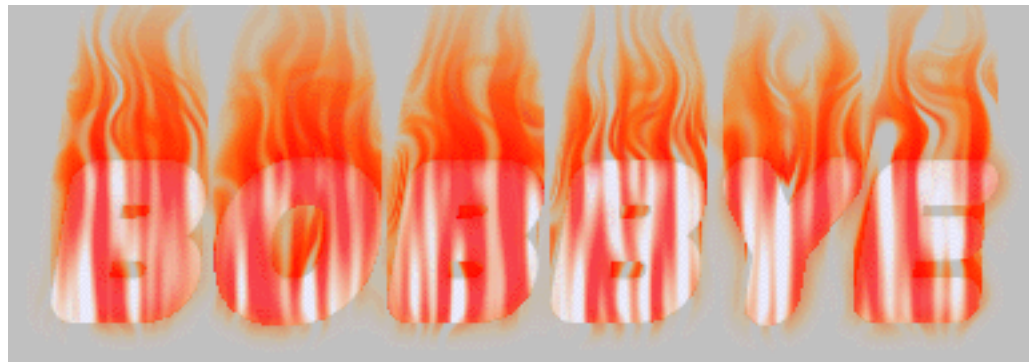
Bobbye

BOBBYE

BOBBYE

EYE CANDY
GLASS

Here are a few left over. I don't recall the exact sequence. I still liked them though :).



Bobbye

I decided to show a few techniques using only PhotoShop's effects and filters for those who don't have Eye Candy and/or Kai's.



*This is the original photo.
Not the best but it'll do.*



*This is with Despeckle only.
Amazing how much it changes
the picture isn't it?*



*Original photo using the Art
History Brush with small
curls.*



*Playing with
Neon Glow here.*

